

Career Connections

A Michigan Tech Career Center Newsletter

Spring 2005

Inside this issue:

Corporate Connections	2
Did You Know...?	2
MTU Salary Survey	3
Upcoming Fall Events	4
Career Center Partners	4

Career Services Staff

Jim Turnquist, Director

Gail Beausoleil, Associate Director

Tina Giachino, Manager Job Development & Career Center Partner Program

Mike Morley, Manager of IT Services

Jeff Kangas, Career Advisor

Gina Goudge, Coordinator of Career Services Programs

Rita Smith, Staff Assistant

Karen Hannon, Office Assistant

Produced by the University Career Center

MichiganTech

Wood Gym packed with students and recruiters

On Tuesday, February 22nd the Wood Gymnasium at the Student Development Complex (SDC) was packed with 88 companies looking to hire MTU students. This is a 57% increase over companies attending the 2004 Winter Job Fair.

This year's job fair attracted several new companies to campus, including Heitkamp and Thumann, Mayo Clinic, Terex, and Zimmer to name a few. Many of our Career Center partners

were also in attendance. Our Career Center partners provide many benefits to our students such as free student access to the eRecruiting resume and interview software, enhanced career and placement training seminars, and corporate speaking engagements. To see a complete list of companies that participated in the 2005 job fair, please visit our Web site at www.career.mtu.edu.

A majority of the attending companies remained

on campus following the job fair to conduct interviews and hire for full-time, co-op, and internship positions.

Our Fall 2005 Career Day is scheduled for September 27, 2005, on the Michigan Tech campus. For more information, please visit us on the Web at www.career.mtu.edu.

Thanks to the many individuals and departments who assisted and donated office space for the interviewing process.



Recruiters from WPS Resources Corporation discuss career opportunities with potential employees at Michigan Tech's Winter Job Fair held on February 22, 2005.

Students make corporate connections

The third annual Corporate Connections event was held on February 21, 2005, the night before the Winter Job Fair.

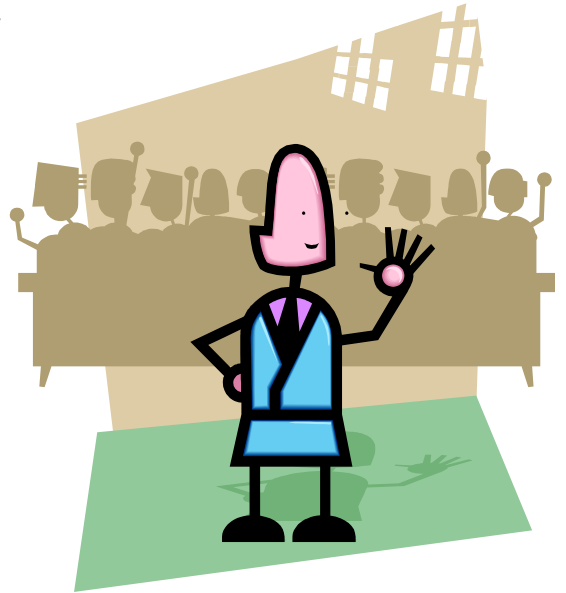
Corporate Connections is an event that is joint hosted by the MTU Chapter of American Society of Mechanical Engineering (ASME) and the Career Center.

The event, which is similar to that of a talk show, allows students to ask questions about searching for jobs, hiring procedures, benefits, how their resumes should look, etc.

This year company representatives from Bemis, Caterpillar, Driesenga

& Associates, Greenheck Fan, Heitkamp and Thumann, Kimberly-Clark, Michigan Economic Development Corporation, Stryker Instruments, Stryker Medical, and Visteon made up the panel. Following the event several companies offered informational sessions.

For more information regarding Corporate Connections or other events sponsored by the Career Center, please contact career@mtu.edu or visit us on the Web at www.career.mtu.edu.



Did you know...

- demand to increase productivity and reduce overhead will drive employers to adopt and integrate new technologies to maximize the efficiency of their computer systems reports *Career Opportunities News*. Over 300,000 new jobs are expected to develop for computer software engineers, according to *Occupational Outlook Quarterly*, with the best opportunities for those with at least a bachelor's degree in computer engineering or computer science plus relevant work experience. Growth, however, may be influenced by outsourcing overseas.
- the small field of environmental engineers employed approximately 47,000 in 2002 but may grow by as much as 35 percent by 2012 as governments at all levels strive to conform with laws and court actions protecting our environment, according to *Occupational Outlook Quarterly*. In addition to protecting tomorrow's world, environmental engineers will be called upon to help restore lands ravaged by careless hazardous waste disposal in the past reports *Career Opportunities News*.
- the Environmental Protection Agency has hired an average of 700 people a year: 30% entry-level and 45% in beginning mid-level positions. The EPA has also been recognized as one of the seven best agencies to work for in Washington according to the *Midwest ACE Newsletter*.
- there are eight areas in the United States where high-tech companies seem to cluster, according to *Business 2.0*, drawing on the pool of scientists and engineers who migrate to them. These centers include Boston, where Route 128 was one of the first sites to attract new tech startups and which is now known for its systems for storing critical information. The largest centers (with over 100 companies) are San Jose (known for enterprise resource planning software), San Diego (J2ME software), and Minneapolis (implantable medical devices). Other centers include Edison, New Jersey (Voice-over-Internet Protocol or VoIP), Raleigh (Linux for the enterprise), Austin (infiniBand networks), and Seattle (streaming media). Another major center is Montreal, known for its animation and special effects software.

Michigan Tech 2003-2004 Salary Survey

Michigan Tech Bachelors Degree candidates graduating between

July 1, 2003—June 30, 2004.

Note: This data changes regularly as job offers are reported by students.

Majors	MTU Placement %	MTU Average Salary	National Average Salary
Accounting	100%	\$51,000	\$41,058
Bioengineering & Biomedical	94%	\$42,788	\$44,912
Biological Sciences	90%	\$29,333	\$29,629
Business Administration	90%	\$35,273	\$38,254
Chemical Engineering	92%	\$50,763	\$52,539
Chemistry	100%	\$46,383	\$37,618
Civil Engineering	95%	\$42,565	\$42,056
Computer Engineering	93%	\$45,366	\$51,297
Computer Science	90%	\$49,326	\$49,036
Education	▪	\$39,332	\$30,646
Electrical Engineering	93%	\$48,911	\$51,124
Electrical Engineering Technology	▪	\$40,896	\$43,425
Engineering Technology	96%	\$45,250	\$43,425
Environmental Engineering	100%	\$43,725	\$42,718
Finance	100%	\$34,333	\$42,921
Forestry	89%	\$37,000	\$36,167
Geological Engineering	100%	\$44,067	\$43,374
Geophysics	100%	\$38,000	\$38,945
Liberal Arts	100%	\$54,000	\$29,713
Management Information Systems	▪	\$43,100	\$41,579
Marketing / Marketing Management (Including Research)	100%	\$46,833	\$34,712
Materials Science & Engineering	100%	\$46,067	\$49,967
Mathematics	90%	\$33,000	\$43,567
Mechanical Engineering	95%	\$47,251	\$48,578
Mechanical Engineering Technology	100%	\$44,016	\$43,425
Mining Engineering	100%	\$45,000	\$43,374
Scientific and Technical Communication	91%	\$39,714	\$34,427
Social Sciences - Other	86%	\$39,000	\$31,698
Surveying	100%	\$37,500	▪

The Career Center attempts to collect this data through telephone calls, written surveys, and via our on-line submission process. If your department has placement/salary data of our graduates, we'd greatly appreciate hearing from you. You may either email your information to career@mtu.edu, or encourage your graduating students to submit this material themselves on our confidential on-line survey found at

www.career.mtu.edu/general/salary/jobofferform.asp

For more information, please contact the Career Center at career@mtu.edu.

MICHIGAN TECHNOLOGICAL UNIVERSITY

University Career Services
Harold Meese Center
1400 Townsend Drive
Houghton, Michigan 49931

Phone: (906) 487-2313
Fax: (906) 487-3317

MichiganTech.



Upcoming Fall Events 2005

- Senior Meeting.....August 30
- Resume Writing Tips.....August 31
- MUB Resume Blitz.....September 7-8
- Interviewing Success.....September 7
- Resume Critique Week.....September 12-16
- Co-op Seminar.....September 14
- Mock Interview Week.....September 19-23
- Job Search Strategies.....September 20
- Career Day.....September 27
- Plant Trip/Benefits.....October 26
- Etiquette Dinner.....November 9

Michigan Tech Career Center Partners

Optimizing company recruiting efforts by preparing students for the workforce.



WPS Resources Corporation

For more information about the Career Center Partners Program contact Tina Giachino at tgiachin@mtu.edu (906) 487-2313 or Steve Stackhouse at sstackho@mtu.edu (906) 487-2228.